

***Pedioplanis laticeps* (A. Smith, 1844)**

KAROO SAND LIZARD; CAPE SAND LIZARD

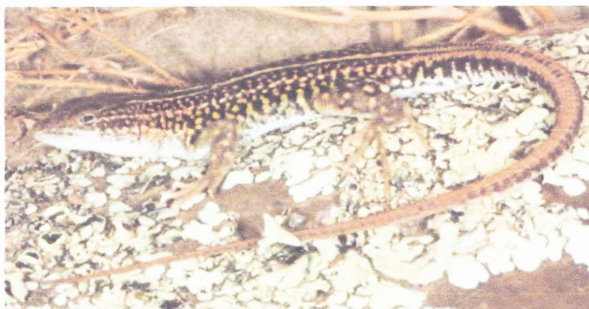
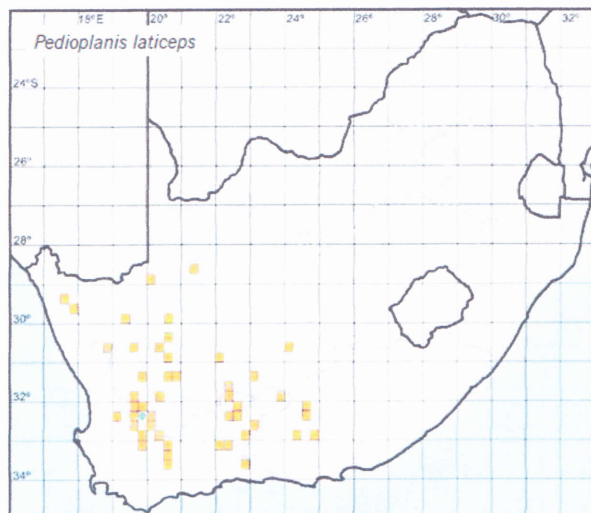
Andrew A. Turner

Global: Least Concern

Endemic

Taxonomy: This species may be confused with its morphologically similar sister species *Pedioplanis burchelli*, but the two taxa are genetically distinct (Makokha *et al.* 2007).

Distribution: Endemic to South Africa. Occurs widely from the Orange River in the north to Anysberg in the south and Graaff-Reinet in the east. Branch (1990a) noted that old, unvouchered records of *P. laticeps* (as *Eremias capensis*) from localities on the western Cape coast (Papendorp,



Pedioplanis laticeps—Sutherland, NC

W. Conradie



Pedioplanis laticeps—Sutherland, NC

W. Conradie

Hondeklipbaai and Kleinsee; Burrage 1978) were probably due to mis-identification with *Meroles knoxii*. These old records are not plotted on the map here.

Habitat: Found on compacted, well-vegetated soils in Succulent Karoo and montane grassland (Branch 1998), often in open areas with stones.

Biome: Succulent Karoo; Nama-Karoo; Fynbos; Albany Thicket; Grassland (marginal).

Assessment rationale: Widespread with no significant threats.

Conservation measures: None recommended.