

---

## ***Timon nevadensis*** (Figs. 7 a-d)

### **Synonyms**

*Lacerta lepida nevadensis* (BUCHHOLZ, 1963)

*Lacerta lepida nevadensis* (MATEO & CASTROVIEJO, 1991)

*Timon nevadensis* (KWET & TRAPP, 2014)

*Timon nevadensis* (AHMADZADEH et al., 2016)

**Dimensions:** adults up to 40 cm and over in length.

**Range:** Spain (Sierra Nevada, from 1600 to 2100 mt.)

**Sierra Nevada** (meaning «mountain range covered in snow» in Spanish) is a mountain range in the province of Granada, Andalusia,. In Sierra Nevada, at 3,479 metres (11,414 ft) above the sea level, there is Mulhacen, the highest point of continental Spain and the third highest in Europe (after the Caucasus mountain and the Alps) .

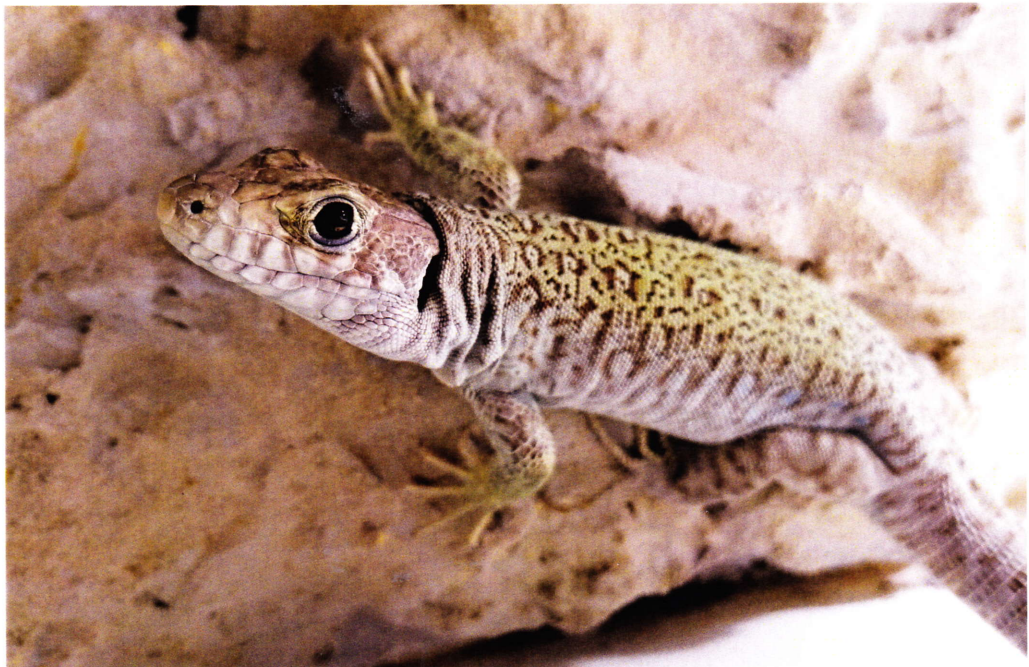
**Features:** Compared to *T. lepidus*, *Timon nevadensis* has a darker livery with darker colours, from slate gray to dark brown, with light blue or cobalt blue spots. During the breeding season, adult males show a very bright blue colour of the livery, with beautiful metallic reflexions (Fig. 8).



**Figure 7 a.** *Timon nevadensis* adult pair. Picture by Alessandro Vetere.



**Figure 7 b.** One day hatched *Timon nevadensis*. Picture by Alessandro Vetere.



**Figure 7 c.** Young female *Timon nevadensis*. Picture by Alessandro Vetere.



**Figure 7 d.** Adult male *Timon nevadensis*, head close-up. Picture by Alessandro Vetere.



**Figure 8.** Captive bred adult male *Timon nevadensis* with diffuse cobalt blue scales reflexions. Picture by Alessandro Vetere.