

This article was downloaded by: [b-on: Biblioteca do conhecimento online UP]

On: 16 July 2012, At: 07:43

Publisher: Taylor & Francis

Informa Ltd Registered in England and Wales Registered Number: 1072954 Registered office: Mortimer House, 37-41 Mortimer Street, London W1T 3JH, UK



Italian Journal of Zoology

Publication details, including instructions for authors and subscription information:
<http://www.tandfonline.com/loi/tizo20>

Genetic data reveal a multiple origin for the populations of the Italian wall lizard *Podarcis sicula* (Squamata: Lacertidae) introduced in the Iberian Peninsula and Balearic islands

I. Silva-Rocha^{a b}, D. Salvi^a & M. A. Carretero^a

^a CIBIO, Centro de Investigação em Biodiversidade e Recursos Genéticos, Universidade do Porto, Vairão, Portugal

^b Departamento de Biologia, FCUP, Faculdade de Ciências da Universidade do Porto, Porto, Portugal

Version of record first published: 16 Jul 2012

To cite this article: I. Silva-Rocha, D. Salvi & M. A. Carretero (2012): Genetic data reveal a multiple origin for the populations of the Italian wall lizard *Podarcis sicula* (Squamata: Lacertidae) introduced in the Iberian Peninsula and Balearic islands, Italian Journal of Zoology, DOI:10.1080/11250003.2012.680983

To link to this article: <http://dx.doi.org/10.1080/11250003.2012.680983>



PLEASE SCROLL DOWN FOR ARTICLE

Full terms and conditions of use: <http://www.tandfonline.com/page/terms-and-conditions>

This article may be used for research, teaching, and private study purposes. Any substantial or systematic reproduction, redistribution, reselling, loan, sub-licensing, systematic supply, or distribution in any form to anyone is expressly forbidden.

The publisher does not give any warranty express or implied or make any representation that the contents will be complete or accurate or up to date. The accuracy of any instructions, formulae, and drug doses should be independently verified with primary sources. The publisher shall not be liable for any loss, actions, claims, proceedings, demand, or costs or damages whatsoever or howsoever caused arising directly or indirectly in connection with or arising out of the use of this material.

Genetic data reveal a multiple origin for the populations of the Italian wall lizard *Podarcis sicula* (Squamata: Lacertidae) introduced in the Iberian Peninsula and Balearic islands

I. SILVA-ROCHA^{1,2}, D. SALVI^{1*}, & M. A. CARRETERO¹

¹CIBIO, Centro de Investigação em Biodiversidade e Recursos Genéticos, Universidade do Porto, Vairão, Portugal, and

²Departamento de Biologia, FCUP, Faculdade de Ciências da Universidade do Porto, Porto, Portugal

(Received 25 January 2012; accepted 23 March 2012)

Abstract

Biological invasions have become a major cause of biodiversity loss. Tracing the origin of the populations of alien species is essential to infer the dispersal pathway and finally to set conservation policies aimed at preventing new introductions. The Italian wall lizard, *Podarcis sicula*, is one of the reptile species most widely introduced, with allochthonous populations occurring from the United States to Turkey. For some of them, instances of geographic expansion and competition/hybridization with autochthonous *Podarcis* sp. have been indicated. In the Iberian Peninsula, five introduced populations are known: Lisbon (W Portugal), Noja, Cantabria (N Spain), La Rioja (N Spain) and Almería (S Spain) and Sant Celoni, Barcelona (NE Spain) while the species now widely ranges Menorca Island in the Balearics. Here we assess the origin of four populations (Barcelona population will not be included) by comparing in a phylogenetic framework the cytochrome *b* gene sequences of specimens from the introduced and native populations. The results from this study provide evidence for distinct sources, pathways, and timing of introduction in Iberian Peninsula and Balearics by *P. sicula* from Tuscany, Calabria, Sicily, and Sardinia. This finding underpins the fact that *P. sicula* holds considerable potential invasiveness and advises for conservation strategies based on a global and preventive plan for avoiding new introductions as well as on eradication and control measures when prevention fails.

Keywords: *Podarcis sicula*, biological invasions, cytochrome *b*, Iberian Peninsula, Menorca

Introduction

Long dispersal movements of fauna constitute natural phenomena in the evolution of biological communities (de Queiroz 2005). However, the increasing degree of anthropisation and human-mediated transport are leading to an enormous increase in the rates of animal translocations. This has resulted in a real epidemic of biological invasions - the process by which an alien species establishes, expands its geographic range and numbers, and exerts ecological or economic impacts in a new area (Brown et al. 2007). Although the effects of an introduction are difficult to predict, several general impacts are now well-known.

In the particular case of reptiles, there is evidence for ecological, evolutionary and social effects, including biotic homogenization, disruptions of food-webs, hybridization, disease, behavioural changes, effects

on human health, between other numerous negative impacts (Ficetola et al. 2009; Kraus 2009). Among the ecological effects, the negative impact on native biota is to be remarked. This is the case of the snake *Natrix maura* which is assumed to be responsible for the decline of the Mallorcan midwife toad (*Alytes muletensis*) through the predation of larvae and adults (Guicking et al. 2005; Kraus 2009; Álvarez et al. 2010). An example of negative social effect is the introduction of the brown tree snakes (*Boiga irregularis*) in Guam, which increase the susceptibility of humans to disease and even death (Fritts et al. 1994; Rodda et al. 1997).

The Italian wall lizard, *Podarcis sicula* constitutes an outstanding case of reptile species largely introduced worldwide. Its natural range is restricted to the Italian Peninsula and Sicily. However, an

*Correspondence: Daniele Salvi, CIBIO, Centro de Investigação em Biodiversidade e Recursos Genéticos, Campus Agrário de Vairão, Rua Padre Armando Quintas, 4485-661 Vairão, Portugal. Tel: +351 252660411. Fax: +351 252661780. Email: danielesalvi.bio@gmail.com

introduction of the species either in historical times or even more recently has been postulated for the Tyrrhenian Islands, Corsica and Sardinia, and in the islands and coastal areas of the eastern Adriatic Sea (Corti 2006; Isailovic et al. 2008 in IUCN 2011). Moreover, *P. sicula* is certainly introduced in the Iberian Peninsula, in Cantabria (Meijide 1981), Almería (Mertens & Wermuth 1960), Lisbon (González de la Vega et al. 2001), La Rioja (Valdeón et al. 2010) and nearby Barcelona (Rivera et al. 2011); in Southern France, in Toulon and Château d'If Island (Morgue 1924; Orsini 1984); in Turkey, in Istanbul and Marmara Islands (Basoglu & Baran 1977); in North Africa, in Tunisia and Tripoli (Arnold & Ovenden 2002); and in the United States, in Philadelphia, Kansas, and New York (Conant 1959; Behler & King 1979; Conant & Collins 1991; Deichsel & Miller 2000).

Several ecological and behavioural traits make *P. sicula* a highly effective invader in the majority of the regions where it is introduced. Experimental results have demonstrated behavioural interference with *P. melisellensis* (Downes & Bauwens 2002), which has gone extinct after introduction of *P. sicula* in Adriatic islets (Nevo et al. 1972). Furthermore, hybridization between *P. sicula* and other *Podarcis* species has been demonstrated by means of genetic data at least with the endemic *Podarcis* of Sardinia (*P. tiliguerta*, Capula 2002), of the Aeolian islands (*P. raffonei*, Capula et al. 2002) and of Sicily (*P. wagleriana*, Capula 1993).

Indeed, this species is very eclectic in habitat use being found in natural grassy areas, roadside verges, scrublands meadows and coastal dunes, but also in agro environments, inside pine plantations, and associated to parkland urban areas, stone walls and buildings (Capula 1994; Oliverio et al. 2001; Biaggini et al. 2006; Corti 2006). The Italian wall lizard usually uses trees and human manufactures as a refuge, so its accidental transportation by humans and the availability of an anthropised environment are important factors for its spread. The use of planted trees and human manufactures as refuges enhances its accidental transportation while the availability of an anthropic environment seems important for its spread (Corti & Lo Cascio 2002).

This proneness of *P. sicula* both to be dispersed by humans and to produce negative effects on native species makes necessary to look closely for their pattern of invasiveness. By looking separately for each case of invasion we can obtain valuable information for the prevention and management of this biological invasion. Molecular evidence supporting the allochthonous status of *P. sicula* have been provided for populations occurring in United States (Deichsel & Miller 2000; Oliverio et al. 2001) and

Menorca (Podnar et al. 2005) and for the Iberian populations of La Rioja and Sant Celoni, Barcelona (Valdeón et al. 2010; Rivera et al. 2011). However, the origin of most of the introduced populations is still unclear. Though, tracing the origin of the introduced populations and identifying the pathways of their translocations constitute the baseline to forecast the colonization patterns, as well as to prevent new introductions (Pyron et al. 2008; Rodda et al. 2008; Dorcas et al. 2010).

In this work, we use a molecular marker to identify the geographic origin of all the introduced populations of *P. sicula* known from Iberian Peninsula and Balearic islands. We specifically aim to determine whether these geographically separated populations derive from a single event of introduction or if they have multiple origins. By tracing the origin of introduced populations we expect to infer the source(s) and pathway(s) of dispersal, crucial for developing conservation and management policies aimed at preventing negative effect on native species.

Material and methods

Populations sampled

Four introduced populations are known from mainland Iberian Peninsula (Figure 1): Lisbon (western Portugal, González de la Vega et al. 2001), Noja (Cantabria, northern Spain, Meijide 1981), Almería (southern Spain, Mertens & Wermuth 1960) and La Rioja (northern Spain, Valdeón et al. 2010) while the species is widespread in Menorca, Balearic Islands (Pérez-Mellado 2002). Very recently another population was found near Barcelona at Sant Celoni (Rivera et al. 2011). All Iberian localities, but La Rioja and Sant Celoni, are coastal, Lisbon and Almería being strictly urban whereas Noja is a sand dune area surrounded by urban habitat. La Rioja and Sant Celoni populations, located 100 km and 15 km inland respectively, are associated to old olive trees on sale in a plant nursery (Valdeón et al. 2010; Rivera et al. 2011).

Sampling and DNA extraction and amplification

The sampling includes all the Iberian and Balearic localities where the species has been reported to be introduced (Figure 1). Tail tips were collected from 23 samples (2–7 samples from each locality, Table I) and then stored in pure ethanol.

Total genomic DNA was extracted from tail tissue following the standard saline method (Sambrook et al. 1989). A fragment of 684 bp of the mitochondrial gene cytochrome *b* (*cyt b*) was amplified by PCR using the primers GluDG-A and

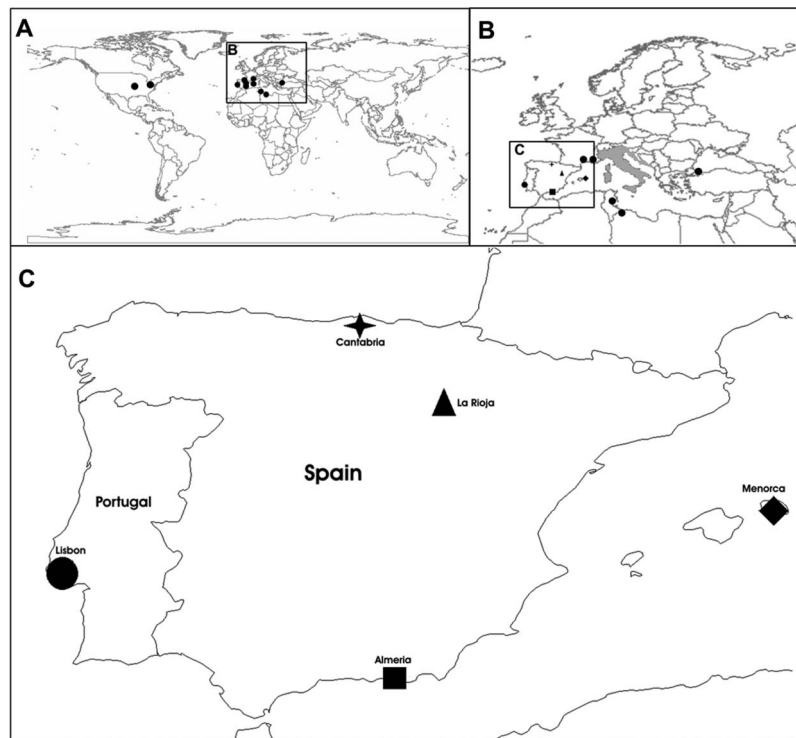


Figure 1. Introduced populations and native range of *Podarcis sicula*. **A**, introduced populations in the World – United States, North Africa and Europe (black dots); **B**, introduced populations in Europe (black) and native range (grey); **C**, introduced populations in the Iberian Peninsula and Menorca.

Table I. Iberian localities where the introduced *P. sicula* populations were sampled. Geographic coordinates and sample size are also reported.

Locality	Country	Coordinates		Sample size
		Latitude	Longitude	
Almeria	Spain	36,8348	2,4651	2
Cantabria	Spain	43,4891	-3,5326	7
La Rioja	Spain	42,4891	-1,7753	2
Lisbon	Portugal	38,7622	-9,0945	5
		40,0256	4,1624	2
Menorca	Spain	39,9776	3,9715	3
		40,0039	3,8689	2

cb3H (Palumbi 1991). The amplification conditions consisted of an initial step of denaturing of 3 min at 94°C, followed by 35 cycles of denaturation of 30 s at 94°C, annealing of 30 s at 51°C and extension of 50 s at 72°C and a final extension step of 5 min at 72°C. The PCR products were purified and sequenced by an external service (by the company MacroGen® Korea).

Sequence data and phylogenetic analysis

Mitochondrial cytochrome b sequences from 39 individuals of *P. sicula* from the native range generated by Podnar et al. (2005) were downloaded

from GenBank (accession numbers AY185095, AY185094, AY770869–AY77090). Three additional sequences from (*Podarcis muralis* and *P. melisellensis*) were also downloaded from GenBank (accession numbers AY185096, AY185029 and AY185057) and included in the phylogenetic analyses as outgroups (following Podnar et al. 2005). We maintained geographic and haplotype designations as in Podnar et al. (2005), in order to facilitate the comparison between our samples and those from previous studies. These sequences were aligned with those generated in the present study (accession numbers JX072938–JX072960) using the ClustalW software (Thompson et al. 1994).

We carried out a Maximum Likelihood (ML) phylogenetic analysis to infer the relationships between the Iberian and Balearic samples and those from the native range of *P. sicula* analyzed by Podnar et al. (2005). The best model of sequence evolution was estimated by Mega 5 (Tamura et al. 2011) under the Bayesian Information Criterion (BIC) as the model HKY + Gamma (Hasegawa et al. 1985; Yang 1993). The ML tree was performed in Mega 5 with the heuristic search mode and the node support was calculated over 1000 bootstrap replicates. In addition to the tree-building method, we analyzed the genealogical relationships among native and non-native haplotypes by means of a statistical parsimony network using the program TCS 1.21 (Clement et al. 2000).

Results

The final alignment includes 65 sequences and 687 base pairs. A total of 42 haplotypes were identified among which 35 from the sequences from Podnar et al. (2005) and eight from the five Iberian and Balearic introduced populations here studied. In particular, in Almería, La Rioja and Lisbon populations, two different haplotypes each were found, while in Cantabria and Menorca one haplotype occurred.

ML tree shows that lizards from Noja (Cantabria) are closely related to those from the “Tuscany” clade in Podnar et al. (2005) (Figure 2). Also, the lizards from Lisbon cluster together with Tuscanian samples, yet being fairly differentiated from them. Haplotypes from Almería and Menorca are related with those from Sicily and Sardinia and included within the “Sicula” haploclade. Moreover, the five Menorcan samples analyzed in this study showed the same haplotype as the single Menorcan sample analyzed by Podnar et al. (2005). The two haplotypes found in the specimens from La Rioja cluster in a distinct clade, which is related to the “Monasterace” (Southeast Calabria) and “Sicula” haploclades. All the relationships above reported were highly supported by bootstrap analysis with BP values ranging from 86 to 99. Based on these relationships, the putative origin of each introduced population is discussed in the next section and depicted in Figure 3.

The network analysis shows 11 distinct networks and the maximum number of mutational steps allowing for a 95% parsimonious connection between haplotypes was estimated to be 11 (Figure 4). The relationships between haplotypes as depicted by the networks corroborate the results from ML analysis. Cantabria lizards cluster together with those from Tuscany, Almería and Menorca samples group

with samples from the Sicula clade, and La Rioja and Lisbon samples constitute two independent groups.

Discussion

Origin, pathways and timing of the introduction

Phylogenetic analysis clearly indicates that the introduced Iberian and Balearic populations of *P. sicula* are related to native populations from distinct Italian regions, and not from other non-native (Iberian) populations. In turn, this result suggests multiple and independent introductions of the Italian wall lizard in the Iberian Peninsula and Menorca (Figure 3).

As a whole, *P. sicula* from Ibero-Balearic localities clustered in two principal haploclades recovered by Podnar et al. (2005), the Tuscany haploclade and the Sicula haploclade, which cluster haplotypes belonging to the *P. s. campestris* and the *P. s. sicula*+*P. s. cetti* subspecies respectively. On the other hand, haplotypes found in the population from La Rioja constitute an independent haploclade and are not included in any of those reported by Podnar et al. (2005).

The Italian wall lizards occurring in Lisbon and Cantabria are likely originated from a Tuscan stock. In particular, Cantabrian lizards seem to be introduced from the Tuscany itself, and perhaps from Florence area since their haplotypes differ in only one-two nucleotide position from the haplotypes found by Podnar et al. (2005) in the native populations from Florence. On the other hand, the lizards sampled in Lisbon were probably introduced from a proximate area to Tuscany as they are closely related to the lizards from Tuscany but fairly differentiated from them (Figure 2).

Both Almería and Menorca lizards are related to the Sicilian and Sardinian populations of *P. sicula*. In both cases, it is difficult to disentangle whether the origin of these allochthonous populations is from Sicily or Sardinia, or even if Almería population derives from the Menorcan stock. Indeed, according to Podnar et al. (2005), the Sardinian samples (assigned to the subspecies *P. s. cetti*) only differ from the Sicilian samples (assigned to the subspecies *P. s. sicula*) by three substitutions in a gene fragment of 687 nucleotides, which suggest and support the hypothesis of a historical colonization of Sardinia from Sicily (Lanza 1982). Thus, Menorcan samples could have been originated either from Sicily as suggested by Greca and Sacchi (1957) or from Sardinia as suggested by Müller (1905) and Eisentraut (1950). Although Podnar et al. (2005) would support the hypothesis of an introduction

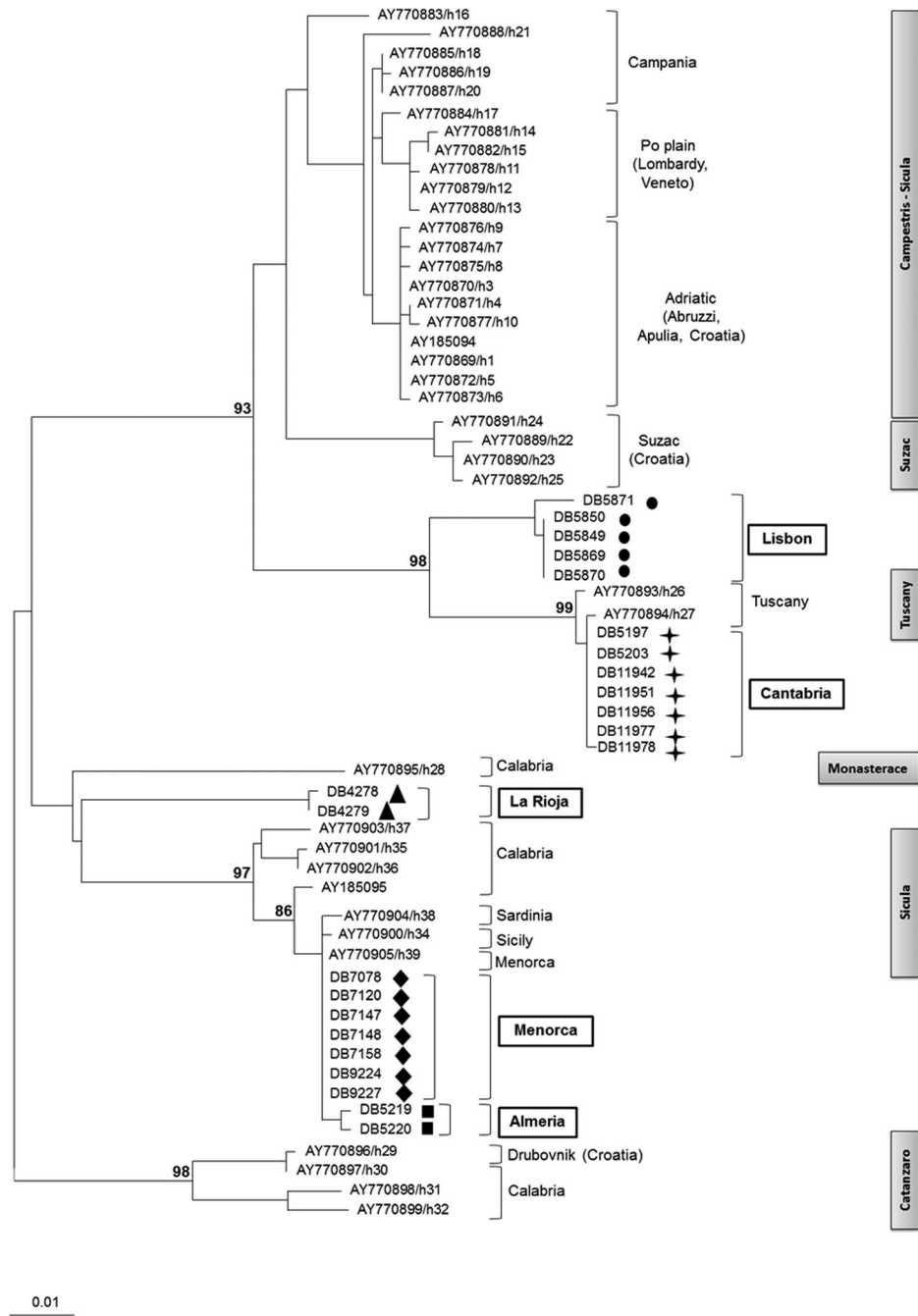


Figure 2. ML phylogenetic tree depicting the relationships between cytochrome b, haplotypes from native *Podarcis sicula* populations (Podnar et al. 2005) and those from the Iberian and Balearic introduced populations: Almeria, Cantabria, La Rioja, Lisbon, and Menorca. Specimens' localities are reported along with *P. Sicula* haploclades (grey boxes) as in Podnar et al. (2005). Bootstrap support is indicated above the nodes of interest.

from Sicily as Menorcan haplotypes are somewhat closer to the Sicilian than to the Sardinian haplotypes (as the nucleotide differences between Menorcan samples and Sicilian/Sardinian samples are 2/3 respectively), the gene fragment they used does not have enough resolution for supporting this statement and the haplotype comparison is based

only on single specimens from Menorca, Sicily and Sardinia. Additionally, the morphological inspections of Menorcan lizards (unpublished data from the authors) show a perfect match with the *cetii* morphotype occurring in Sardinia rather than with the *sicula* morphotypes observed in Sicily. Thus, taking into account this evidence, we would tentatively suggest

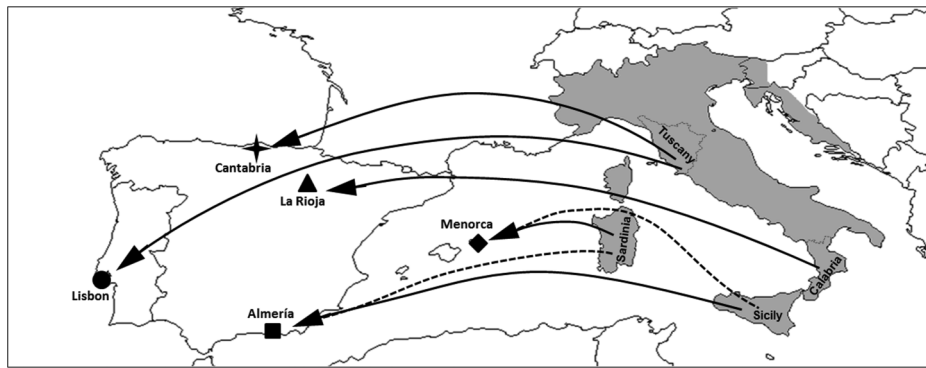


Figure 3. Origin of the Iberian and Balearic populations of *Podarcis sicula* as inferred from genetic analyses.

a Sardinian origin for the Menorcan population of *P. sicula*, although the large spectrum of morphological variation of *P. sicula* advises for caution in the use of morphological diagnosis when inferring the origin of populations. Following a similar reasoning and based on morphological data, a tentative hypothesis of a Sicilian origin can be drawn for the lizards introduced in Almería.

Lizards from La Rioja constitute an independent clade, which is related to Monasterace and Sicula haploclades of Podnar et al. (2005), although well differentiated from them. This result only partially agrees with those reported by Valdeón et al. (2010), who also found La Rioja samples to be related with Catanzaro, Monasterace, and Sicula haploclades, but with a closer relationship with the former rather constituting an independent clade. However, it is important to notice that given the high evolutionary rate of the mitochondrial gene fragment analysed in this study, it provided a higher resolution than those used by those authors (12S and 16S genes combined). This evidence suggests not only that the source population of La Rioja would be located in an area close to Calabria (and perhaps in between Monasterace and Reggio Calabria), but also that the genetic diversity of *P. sicula* in the southern portion of its range has not been completely sampled, yet.

The pathways of introduction are known for some of the studied populations. Evidence for an anthropogenic introduction through the trade of old olive trees from southern Italy to Spain has been reported by Valdeón et al. (2010) and Rivera et al. (2011) for La Rioja and Sant Celoni populations respectively. Lisbon population appears to be introduced through the transport of several materials and ornamental plants during the Expo'98 event (González de la Vega et al. 2001). As already mentioned, the Italian wall lizard often uses trees and human manufactures as refuge and thermoregulatory

site. Similarly the pathways of introduction for the other Iberian populations could have followed the human translocations of cargo in the maritime trade. Both Almería and Cantabrian populations maintained a route of maritime traffic with Italy during the Spanish Civil War between 1936 and 1939 (Rivera & Arribas 1993). Noja population has not a seaport, but may derive from the already extinct Santander population, which was closer to a seaport (Pleguezuelos 2004). So it is possible that the primary pathway of introduction in Cantabria region was also derived from the development of maritime trade.

Even if based on circumstantial historical evidence, the timing of these introductions seems different from case to case. Noja (Cantabria) and Almería populations are considered to be introduced in the late XIX century or early XX century when an intensification of maritime traffic occurs (Mertens & Wermuth 1960; Meijide 1981; Henle & Klaver 1986; Olmedo 1997). Lisbon, La Rioja and Sant Celoni populations would be even more recent due to ornamental plants transportation (end of 90s and during the 2008/2009 period respectively; González de La Vega et al. 2001; Valdéon et al. 2010; Rivera et al. 2011). Finally, the origin of Menorcan population is probably dated to a more ancient time, likely back to the Middle Age (Mayol 1985) when the traffic between Italian Republics and Balearic Islands was intense, as the species is widespread across the entire islands (Pleguezuelos 2004).

Conservation implications

The results from this study provide evidence for distinct sources, pathways and timing of introduction in Iberian Peninsula and Menorca by *P. Sicula* from the central and the southern portion of its native distribution range. This evidence is crucial to design conservation strategies.

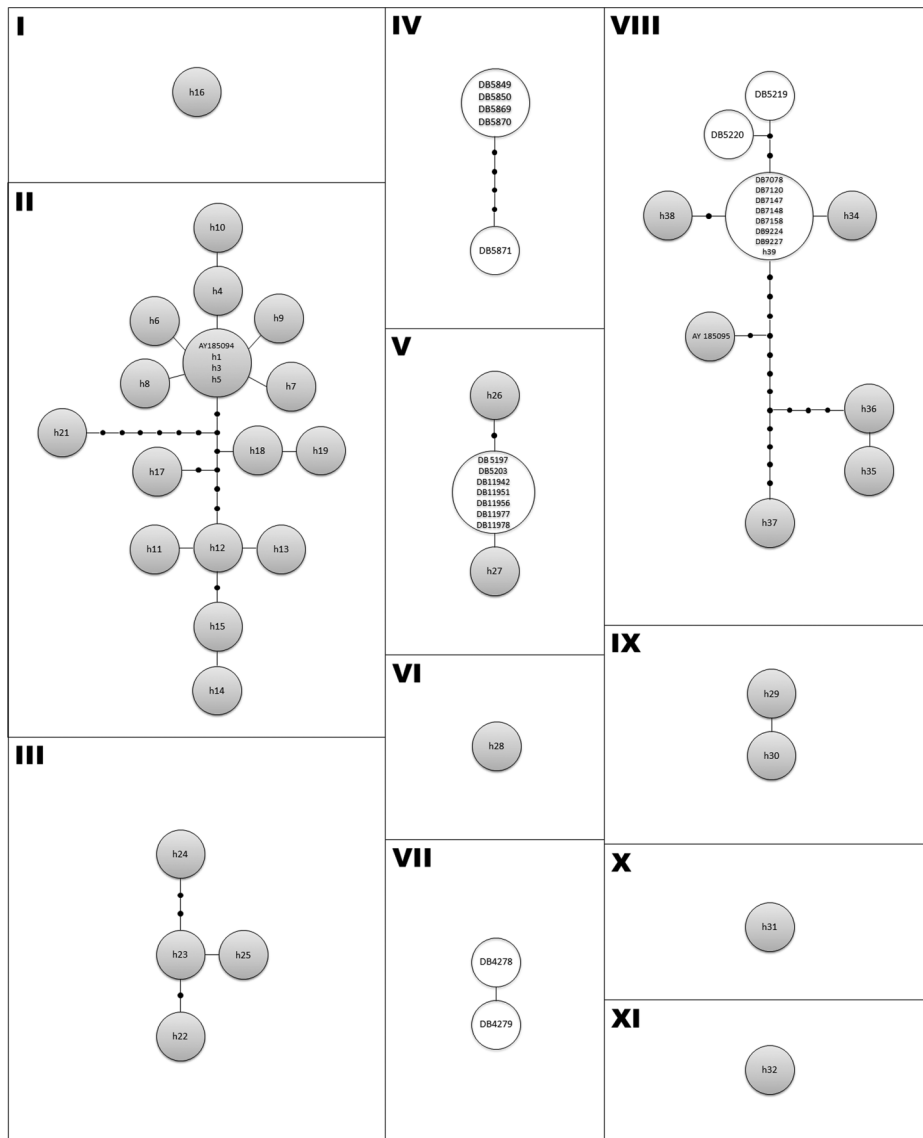


Figure 4. Statistical parsimony haplotype network depicting the genealogical relationships between native and non-native *P. sicula* haplotypes. See Table I and Figure 2 for details on sampling localities and haplotypes codes. Circle size is proportional to the number of samples with the same haplotype. Black circles represent missing haplotypes. The eleven networks include samples from: (I) Campania - *Campestris Sicula* clade; (II) Po Plain + Campania + Adriatic - *Campestris-Sicula* clade; (III) Suzac (Croatia) - *Suzac* clade (IV); Lisbon (non-native); (V) Cantabria (non-native) + Tuscany - Tuscany clade; (VI) Calabria - *Monasterace* clade; (VII) La Rioja (non-native) (VIII) Almeria (non-native) + Menorca (non-native) + Sardinia + Sicily + Calabria - *Sicula* clade; (IX) Drubovnik (Croatia) - *Catanzaro* clade; (X) Calabria - *Catanzaro* clade; and (XI) Calabria - *Catanzaro* clade.

If introduction would come from a single source, conservation strategies would involve controlling in the original region/locality, which could be a feasible target. Since, in contrast, multiple independent events of introduction have been found here, a realistic conservation planning should be more global and preventive, addressed to the detection and control of alien lizards when arrived. The prevention of the introduction is, in fact, the most effective and cheaper way to avoid it and can be done by implementing inspection and quarantine measures of the

commercial cargo and trade, since these two means are the main pathways of introduction.

When the prevention fails, an eradication and control program should be implemented, paying attention to both biological data, population size and distribution, and specific educational effort for the general public are needed for such programs to be successful. Introduced populations of *P. sicula* have been successfully eradicated from La Rioja (Valdeón et al. 2010) and Mallorca (Pinya & Carretero 2011; Mateo JA, pers. comm.) and it could be possible also

for the Noja (Cantabria) population as its presence is localized. Conversely, the populations in Almería and Lisbon have already reached a size, which makes the full eradication not feasible (Pleguezelos 2004; Loureiro et al. 2008; personal observations), thus control measures should be taken to keep the population size stable and avoid its expansion. In the case of Menorca, *P. sicula* is naturalized since a long time, being nowadays the dominant species in the main island, so it is almost impossible to take an effective action. However, a substantial effect must be kept to prevent translocations toward the small surrounding islets of Menorca (as well as to other Balearic Islands) where it could be harmful for the autochthonous and endangered *Podarcis lilfordi* (Pinya & Carretero 2011).

Finally, on a general ground besides investigating the origin and the pathways of the introductions, resources have to be invested also for collecting more data about: (i) the current demographic status and spatial distribution of the introduced populations; (ii) the factors limiting or promoting the successful establishment after of the introduction and expansion (adopting Species Distribution Models approach to predict the invasion risk (Schulte et al. 2011)), as well as on (iii) the impacts of this species on native lizards. The integration of all this information would allow a deep comprehension and a successful management of this biological invasion.

Acknowledgements

We thank Ana Perera, Antigoni Kaliontzopoulou, Catarina Rato, Fátima Jorge, Enrique García-Muñoz, Michela Maura and Verónica Gomes for helping us in collecting samples. DS is supported by the FCT post-doctoral grant SFRH/BPD/66592/2009 and by the SYNTHESYS Project <http://www.synthesys.info/> which financed by European Community Research Infrastructure Action under the FP7 Capacities Programme at the Museo Nacional de Ciencias Naturales of Madrid (CSIC). The study was supported by projects PTDC/BIA-BEC/101256/2008 and PTDC/BIA-BEC/102280/2008 (FCT, Portugal).

References

Álvarez C, Mateo JA, Oliver J, Mayol J. 2010. Los ofidios ibéricos de introducción reciente en las Islas Baleares. *Boletín de la Asociación Herpetológica Española* 21:126–131.

Arnold EN, Ovenden DW. 2002. A field guide to the reptiles and amphibians of Britain and Europe. London: Harper Collin.

Basoglu M, Baran I. 1977. Türkiye Sürüngenleri I: The Reptiles of Turkey. *Ege Üniversitesi Fen Fakültesi Kitaplar Serisi*. Bornova 76.

Behler JL, King FW. 1979. The Audubon society field guide to North American reptiles and amphibians. New York: Alfred A. Knopf.

Biaggini M, Dapporto L, Paggetti E, Corti C. 2006. Distribution of lacertid lizards in a Tuscan agro-ecosystem (Central Italy). In: Corti C, Lo Cascio P, Biaggini M, editors. Mainland and insular lacertid lizards: a Mediterranean perspective. Italy: Firenze University Press. pp. 13–21.

Brown GP, Shilton C, Philips Benjamin L, Shine R. 2007. Invasion, stress and spinal arthritis in cane toads. *Proceedings of the National Academy of Sciences of the United States of America* 104:17698–17700.

Capula M. 1993. Natural hybridization in *Podarcis sicula* and *P. wagleriana* (Reptilia: Lacertidae). *Biochemical Systematics and Ecology* 21:373–380.

Capula M. 1994. Population genetics of a colonizing lizard: Loss of variability in introduced populations of *Podarcis sicula*. *Experientia* 50:691–696.

Capula M. 2002. Genetic evidence of natural hybridization between *Podarcis sicula* and *Podarcis tiliguerta* (Reptilia). *Amphibia-Reptilia* 23:313–321.

Capula M, Luiselli L, Bologna MA, Ceccarelli A. 2002. The decline of the Aeolian wall lizard, *Podarcis raffonei*: causes and conservation proposals. *Oryx* 36:66–72.

Clement M, Posada D, Crandall KA. 2000. TCS: a computer program to estimate gene genealogies. *Molecular Ecology* 9:1657–1660.

Conant R. 1959. Lacerta colony still extant at Philadelphia. *Copeia* 1959:335–336.

Conant R, Collins JT. 1991. A field guide to reptiles and amphibians: Eastern and Central North America. 3rd ed. Boston: Houghton Mifflin Company.

Corti C. 2006. *Podarcis sicula*. *Lucertola campestre*, Italian wall lizard. In: Sindaco R, Doria G, Razzetti E, Bernini F, editors. *Atlante degli Anfibi e dei Rettili d'Italia*. Atlas of Italian Amphibians and Reptiles. Firenze: Polistampa. pp. 486–489.

Corti C, Lo Cascio P. 2002. The lizards of Italy and Adjacent Areas. Frankfurt am Main: Chimaira.

Deichsel G, Miller LL. 2000. Changes of Specific Status for the Green Lizard Lacerta, an alien lizard introduced in Topeka. *Kansas Herpetological Society Newsletter* 119:10–11.

de Queiroz A. 2005. The resurrection of oceanic dispersal in historical biogeography. *Trends in Ecology and Evolution* 20:68–73.

Dorcas ME, Wilson JD, Gibbon JW. 2010. Can invasive Burmese pythons inhabit temperate regions of the southeastern United States? *Biological Invasions* 13:793–802.

Downes S, Bauwens D. 2002. An experimental demonstration of direct behavioural interference in two Mediterranean lacertid lizard species. *Animal Behaviour* 63:1037–1046.

Eisentraut M. 1950. Das Fehlen endemischer und das Auftreten landfremder Eidechsen auf den beiden Hauptinseln der Balearen, Mallorca und Menorca. *Zoologische Beiträge Berlin* 1:3–11.

Ficetola GF, Thuiller W, Padoa-Schioppa E. 2009. From introduction to the establishment of alien species: bioclimatic differences between presence and reproduction localities in the slider turtles. *Diversity and Distributions* 15:108–116.

Fritts TH, McCoid MJ, Haddock RL. 1994. Sypptoms and circumstances associated with bites by the brown tree snake (Colubridae: *Boiga irregularis*) on Guam. *Journal of Herpetology* 28:27–33.

Gonzalez de la Vega JP, Gonzalez-Garcia JP, Garcia-Pulido T, Gonzalez-Garcia G. 2001. *Podarcis sicula* (Lagartija italiana), primera cita para Portugal. *Boletín de la Asociación Herpetológica Española* 12:9.

- Greca M, Sacchi CF. 1957. Problemi del popolamento animale nelle piccole isole mediterranee. *Annuario Museo Zoologico della Università di Napoli* 9:1–188.
- Guicking D, Griffiths RA, Moore RD, Jogger U, Wink M. 2005. Introduced alien or persecuted native? Resolving the origin of the Viperine Snake (*Natrix maura*) on Mallorca. *Biodiversity and Conservation* 15:3045–3054.
- Hasegawa M, Kishino H, Yano T. 1985. Dating of the human–ape splitting by a molecular clock of mitochondrial DNA. *Journal of Molecular Evolution* 22:160–174.
- Henle K, Klaver CJJ. 1986. *Podarcis sicula* (Rafinesque–Schmaltz, 1810) – Ruineneidechse. In: Böhme W, editor. *Handbuch der Reptilien und Amphibien Europas*, vol. 2/II: Echsen III. Wiesbaden: AULA-Verlag. pp. 254–342.
- Isailovic JC, Vogrin M, Corti C, Mellado VP, Sá-Sousa P, Cheylan M, Pleguezuelos J, Sindaco R, Romano A, Avci A. 2008. *Podarcis siculus*. In: IUCN 2011. *IUCN Red List of Threatened Species*. Version 2011. Available: www.iucnredlist.org, Accessed Sep 2011.
- Kraus F. 2009. *Alien Reptiles and Amphibians: A Scientific compendium and analysis*. New York: Springer.
- Lanza B. 1982. Ipotesi sulle origine del popolamento erpetologico della Sardegna. *Lavori della Società Italiana di Biogeografia* 8:723–744.
- Loureiro A, Ferrand N, Carretero MA, Paulo O, editors. 2008. *Atlas dos Anfíbios e Répteis de Portugal*. Lisboa: Instituto da Conservação da Natureza e da Biodiversidade.
- Mayol J. 1985. *Réptils i amfibis de les Illes Balears*. *Manuales d'Introducció a la Naturalesa* 6. Palma de Maiorca: Editorial Moll.
- Meijide M. 1981. Una nueva población de *Lacerta sicula* rafinesque para el norte de España. *Acta Vertebrata* 8:304–305.
- Mertens R, Wermuth H. 1960. *Die Amphibien und Reptilien Europas*. Frankfurt am Main: Verlag Waldemar Kramer.
- Morgue M. 1924. Note succincte sur les espèces de *Lacerta muralis* des îles du Golfe de Marseille. *Bulletin de la Société Linnéenne de Lyon* 3:55.
- Müller L. 1905. Ein neuer fundort der *Lacerta serpa* Raf. *Zoologischer Anzeiger Leipzig* 28:502–504.
- Nevo E, Gorman GC, Soule M, Yang EJ, Clover R, Jovanovic V. 1972. Competitive Exclusion between Insular *Lacerta* Species (Sauria, Lacertidae). *Oecologia* 10:183–190.
- Oliverio M, Burke R, Bologna MA, Wirz A, Mariottini P. 2001. Molecular characterization of native (Italy) and introduced (USA) *Podarcis sicula* populations (Reptilia, Lacertidae). *Italian Journal of Zoology* 68:121–124.
- Olmedo G. 1997. *Podarcis sicula* (Rafinesque, 1810). In: Pleguezuelos JM, editor. *Distribución y biogeografía de los anfibios y reptiles en España y Portugal*, vol. 3. Granada: Monografías de Herpetología. pp. 246–248.
- Orsini JP. 1984. A propos du Lézar sicilien *Podarcis sicula* en Provence. *Bulletin du Centre de Recherche Ornithologique de Provence* 6:8.
- Palumbi S, Martin A, Romano S, Millan WO, Stice L, Grabowski G. 1991. *The simple fool's guide to PCR* (ver. 2). Honolulu: University of Hawaii.
- Pérez-Mellado V. 2002. *Podarcis sicula* (Rafinesque, 1810). Lagartija italiana. In: Pleguezuelos JM, Márquez R, Lizana M, editors. *Atlas y libro rojo de los anfibios y reptiles de España*. Madrid: Dirección General de Conservación de la Naturaleza, Asociación Herpetológica Española (2ª impresión). pp. 257–259.
- Pinya S, Carretero MA. 2011. The Balearic herpetofauna: A species update and a review on the evidence. *Acta Herpetologica* 6:59–80.
- Pleguezuelos JM. 2004. Las especies introducidas de anfibios y reptiles. In: Pleguezuelos JM, Márquez R, Lizana M, editors. *Atlas y libro rojo de los anfibios y reptiles de España*. Madrid: Dirección General de Conservación de la Naturaleza, Asociación Herpetológica Española (3ª impresión). pp. 502–532.
- Podnar M, Mayer W, Tvrtković N. 2005. Phylogeography of the Italian wall lizard, *Podarcis sicula*, as revealed by mitochondrial DNA sequences. *Molecular Ecology* 14:575–588.
- Pyron RA, Burbrink FT, Guirer, TJ. 2008. Claims of potential expansion throughout the U.S. by invasive python species are contradicted by ecological niche models. *PloS one* 3:e2931.
- Rivera J, Arribas O. 1993. Anfibios y reptiles introducidos de la fauna española. *Quercus* 84:12–16.
- Rivera X, Arribas O, Carranza S, Maluquer-Margalef J. 2011. An introduction of *Podarcis sicula* in Catalonia (NE Iberian Peninsula) on imported olive trees. *Bulletin de la Societat Catalana d'Herpetologia* 19:79–85.
- Rodda GH, Fritts TH, Chiszar D. 1997. The disappearance of Guam's wildlife: new insights for herpetology, evolutionary ecology and conservation. *BioScience* 47: 565–574.
- Rodda GH, Jarnevich CS, Reed RN. 2008. What parts of the US mainland are climatically suitable for invasive alien pythons spreading from Everglades National Park? *Biological Invasions* 11:241–252.
- Sambrook J, Fritsch F, Maniatis T. 1989. *Molecular Cloning: a laboratory manual*. 2nd ed. New York: Cold Spring Harbor Laboratory, Cold Spring Harbor Laboratory Press.
- Schulte U, Hochkirch A, Lötters S, Rödder D, Schweiger S, Weimann T, Veith M. 2011. Cryptic niche conservatism among evolutionary lineages of an invasive lizard. *Global Ecology and Biogeography* 21:298–311.
- Tamura K, Peterson D, Peterson N, Stecher G, Nei M, Kumar S. 2011. MEGA5: Molecular Evolutionary Genetics Analysis using Maximum Likelihood, Evolutionary Distance, and Maximum Parsimony Methods. *Molecular Biology and Evolution* 28:2731–2739.
- Thompson JD, Higgins DG, Gibson TJ. 1994. CLUSTAL W: improving the sensitivity of progressive multiple sequence alignment through sequence weighting, position specific gap penalties and weight matrix choice. *Nucleic Acids Research* 22:4673–4680.
- Valdeón A, Perera A, Costa S, Sampaio F, Carretero MA. 2010. Evidencia de una introducción de *Podarcis sicula* desde Italia a España asociada a una importación de olivos (*Olea europaea*). *Boletín de la Asociación Herpetológica Española* 21: 122–126.
- Yang Z. 1993. Maximum likelihood estimation of phylogeny from DNA sequences when substitution rates differ over sites. *Molecular Biology and Evolution* 10:1396–1402.